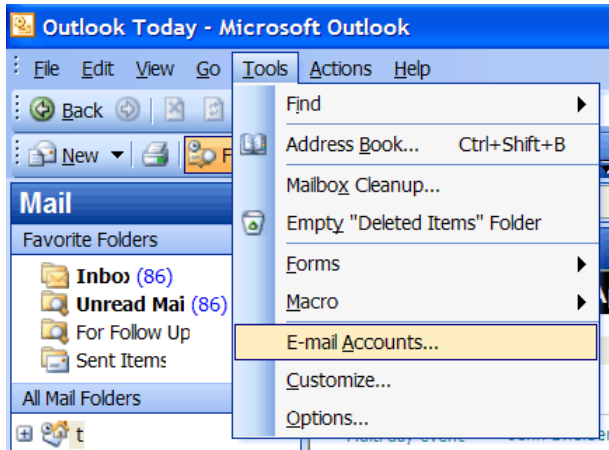


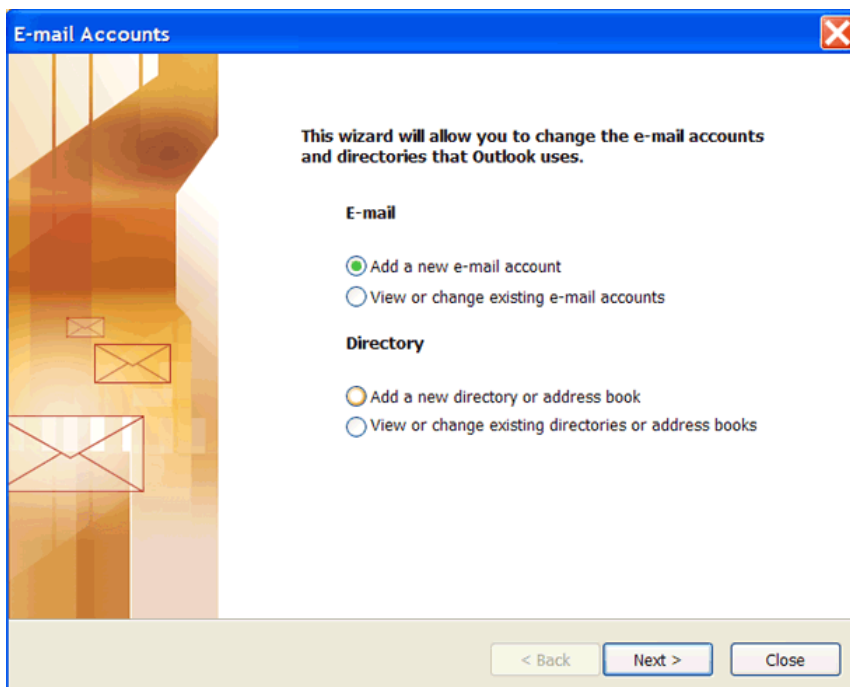
# Outlook 2003 Setup

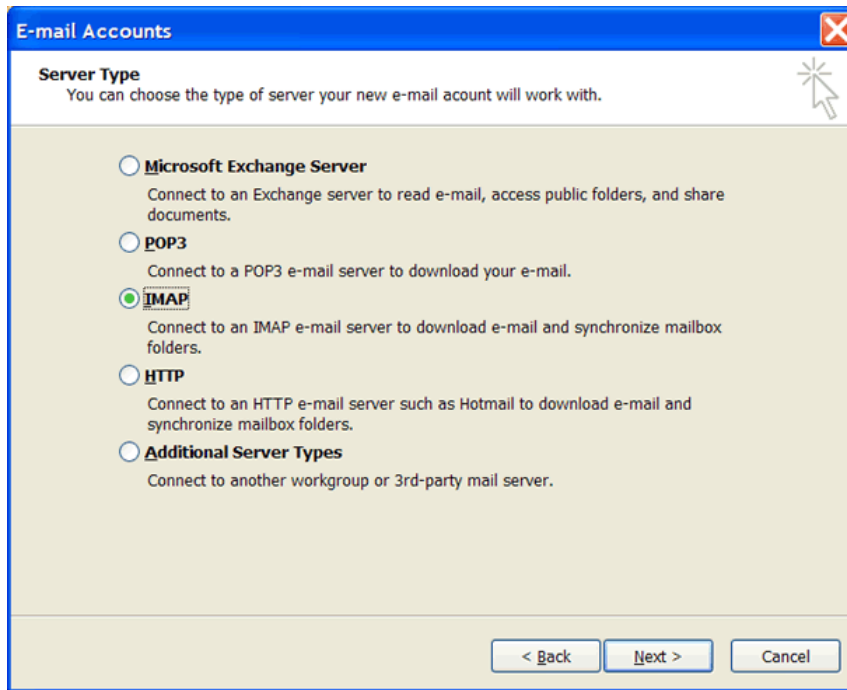
---

Open Outlook and go to Tools -> Email Accounts.



Select "Add a new e-mail account" and then click Next.





Your Name: Enter your name as you want it to appear on outgoing messages.

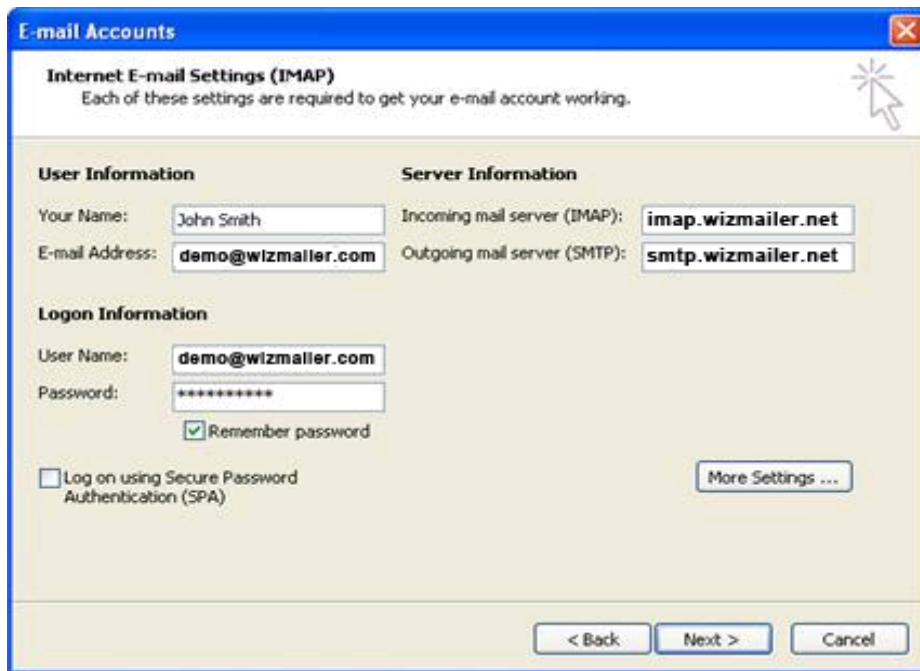
mail Address: Enter your email address.

Incoming mail server: imap.wizmailer.net

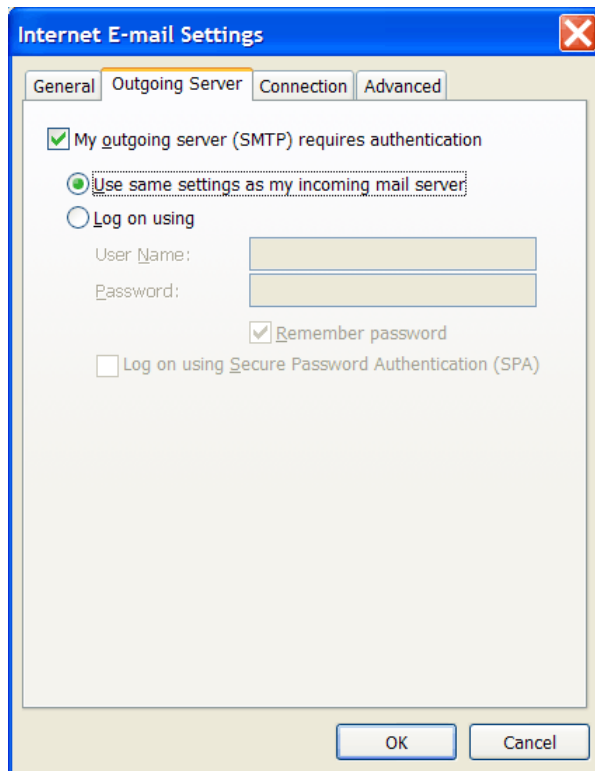
Outgoing mail server: smtp.mailanyone.net

User name: Enter your Wizmailer username.

Password: Enter your Wizmailer Password.



Click on the Outgoing Server tab and check “My outgoing server (SMTP) requires authentication.”  
Click OK.



Click on the Advanced change and change your outgoing (SMTP) port from 25 to 2500.

Outgoing server (SMTP): 2500

Click OK to finish your setup.

Click Next and then Finish to complete setup.

